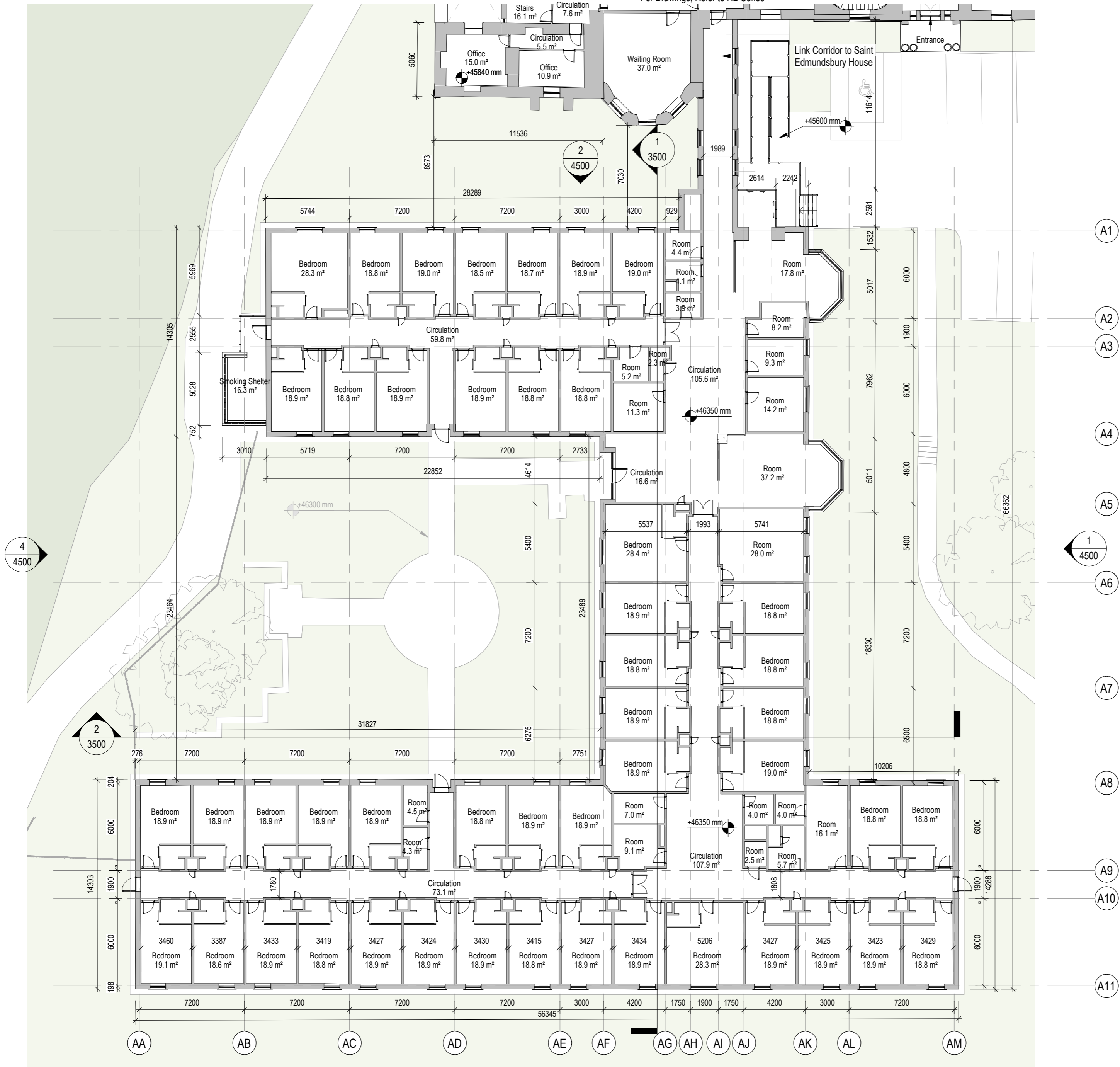


Saint Edmundsbury House  
For Drawings, Refer to HB Series



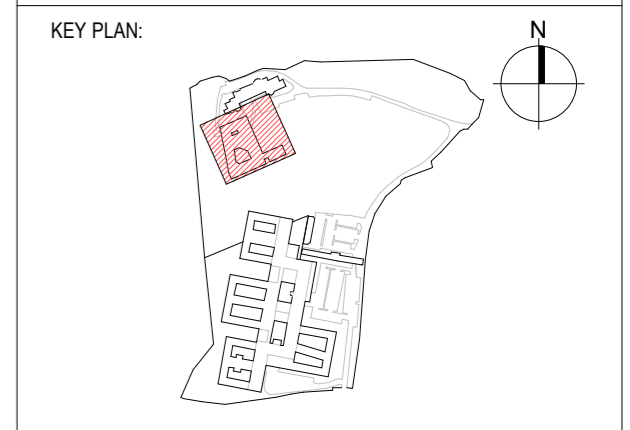
1 ALO Existing Ground Floor  
2500 Scale: 1 : 200

3 4500

**COPYRIGHT:**  
The design and details shown on this drawing are applicable to The Named Project only and may not be, reproduced, modified or relayed in whole or part or be used for any other project or purpose without the prior written permission of TOT Architects with whom copyright resides.

DO NOT SCALE this drawing. Use figured dimensions only. The Contractor is responsible for checking all levels and dimensions on site prior to commencement of works. Any discrepancies are to be referred to the ARCHITECT.

Drawings to be read in conjunction with all other Consultants Drawings & Specifications were relevant. Proprietary items shall be fixed in strict accordance with the Manufacturer's Instructions. Sizes of proprietary items shall be checked with Manufacturer.



REVISIONS:

DATE	REV.	BY.	DESCRIPTION
17/04/26	0	LC	ISSUED FOR PLANNING

**TOT ARCHITECTS**

REGISTERED OFFICE  
49 Upper Mount Street  
Dublin 2, D02 FR85, Ireland

T +555 1 705 7800  
W www.totarch.ie  
E info@totarch.ie

CLIENT: **SPUH**

PROJECT: **St. Edmundsbury Hospital  
Lucan**

PROJECT STAGE: **Planning**

DRAWING TITLE:  
**Existing 52 beds Unit Ground Floor Plan**

DRAWN: MA	CHECKED: LC	APPROVED: DS	DATE: 17/04/2026
--------------	----------------	-----------------	---------------------

JOB NUMBER: 20-77	SHEET SIZE: A2 L	SCALE: 1 : 200
----------------------	---------------------	-------------------

INFORMATION CONTAINER IDENTIFICATION:  
SPMHS - AU - AEO - DR - TOT - AR - 2500

ACCEPTANCE CODE: S	PURPOSE CODE: P3	REVISION: 0
-----------------------	---------------------	----------------